

Professional conference specialists are on-site to take care of all your needs, including audio/visual equipment and full-service catering.

Name of Room	Dimensions	Square Ft.	Reception	Rounds	Classroom	Theater	U-Shape	Conference
Grand Ballroom	132' x 50'	6,600	800	500	350	600	-	-
Ballroom I	35' x 50'	1,835	250	160	108	150	-	-
Ballroom II	60' x 50'	3,125	300	200	162	250	-	-
Ballroom III	31' x 50'	1,640	150	120	81	100	-	-
Applegate Ballroom	62' x 40'	2,500	200	130	70	250	45	50
Breakout room A	42' x 40'	1,700	100	80	60	80	25	30
Breakout room B	20' x 40'	800	70	50	12	40	20	25
Evergreen Ballroom	46' x 36'	1,700	150	120	40	70	40	45
Breakout room C	28' x 36'	1,050	80	80	30	50	30	35
Breakout room D	18' x 36'	650	40	40	12	30	12	20



Rounds



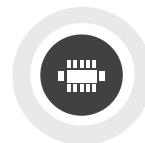
Classroom



Theatre

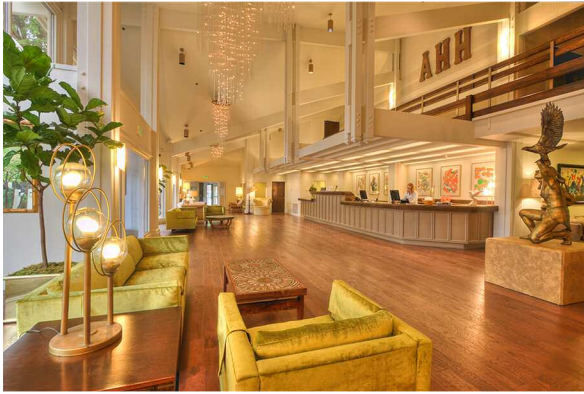


U-Shape



Conference

# Welcome to Ashland Hills Hotel & Suites



Conveniently located off of I-5, on a quiet side of town and just 3 miles from downtown Ashland, the hotel offers over 10,000 square feet of flexible banquet spaces, 100 spacious guest rooms and suites, an outdoor pool and jacuzzi, as well as two tennis courts. Experience an uplifting 1970s retro-modern, timeless design, comfortable furnishings and 14 acres of land with spectacular mountain vistas. It's a perfect destination for your next conference, business meeting, or social event.



**ASHLAND**HILLS  
Hotel & Suites

To book your stay call: 855-482-8310

2525 ASHLAND STREET • ASHLAND, OREGON 97520

[AshlandHillsHotel.com](http://AshlandHillsHotel.com)